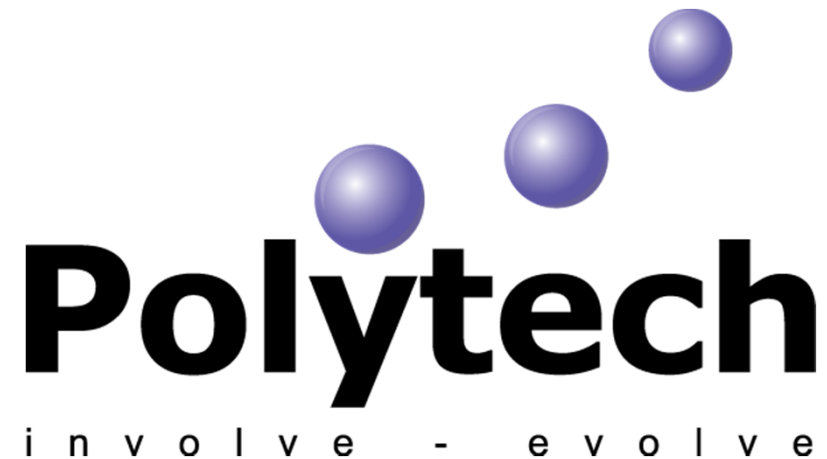




Welcome to Polytech



Company Presentation
July 2012

- Company: Polytech Electronics Technology (Dong Guan) Co., Ltd
- Established: 2004
- Total Capital Investment: USD 8.7 Million
- R&D Investment :USD 900K
- Location: Qing Xi Town, Dong Guan, Guang Dong
- Factory Area: 25,000 Square Meters
- Employees: Approx. 400
- Products : Telecommunication Keypads, Automotive Keypads, Medical Keypads, Plastic Parts & Sub-Assemblies



詮立电子(东莞)科技有限公司
广东省东莞市清溪镇金星工业区

Jin Xing Industrial Zone, Qing Xi Town
Dong Guan, Guang Dong Province
China PC: 523648

Tel: (86-769) 86814718

Fax: (86-769) 86814717

- ISO 9001 Certification awarded on November 2005
- RoHS Compliance awarded on Jan 2007
- ISO 14001:2004 Certification awarded on Sept 2007
- ISO/TS 16949 Certification awarded on Jan 2008



Vision & Mission

OUR VISION

To be a **dominant** player
providing keypad
integrated solutions
through commitment in,

Our **Customers,**

Our **Environment,**

Our **Business,**

Our **People**

OUR MISSION

Involvement with our
customers and evolving
as a **company**

Involvement thru
collaboration in all business
process.

Evolving thru customer focus,
world class practices, leading
technology, continuous
improvement and team work

Operations

**Polytech
DongGuan**

- Telecommunication Keypads
- Silicone Rubber Keypads

**Polytech
Tai Feng**

- Plastic housing

**Polytech
Batam**

- SMT/ Remote Control

**SOE
DongGuan**

- Mylar / Metal Dome
- Over-lay
- Module assembly

**SOE
JiaXing**

- PC/NoteBook membrane
- LGF, Light Guide Film

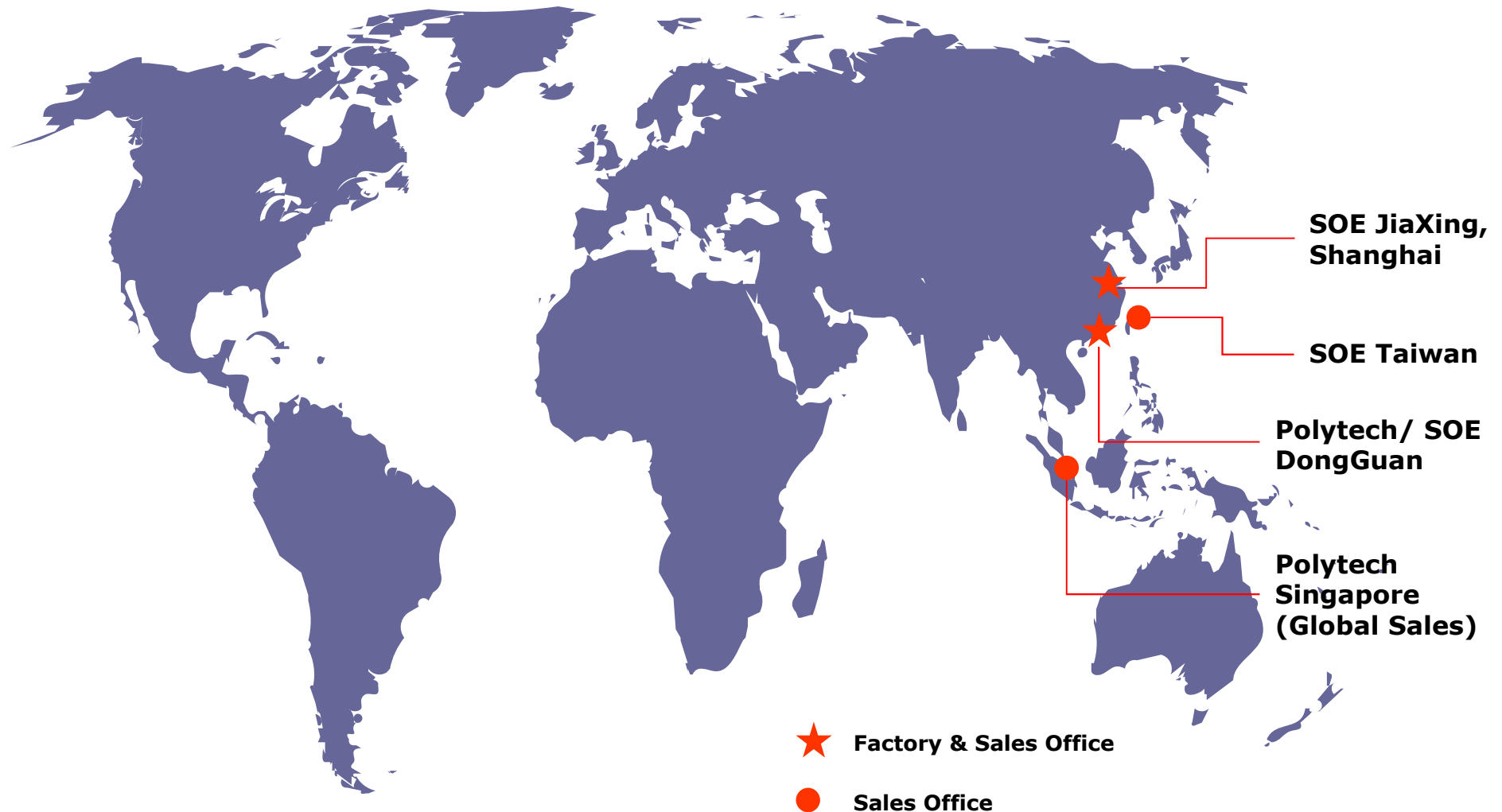
**SOE
Taipei**

- Touch Panel

Marketing Channel

Global Sales

**Polytech
Singapore**



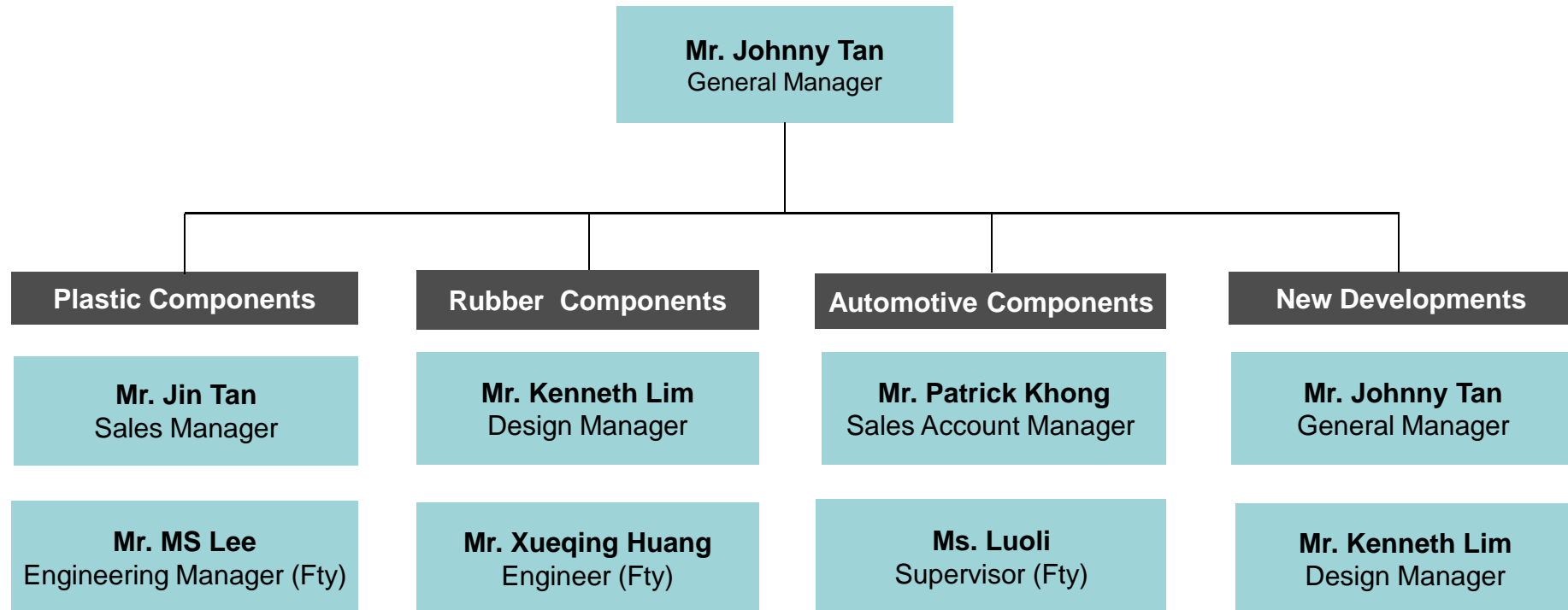
Global Sales Contacts

Name	Role	Email	Telephone
Johnny Tan	General Manager	bct@polytech.com.sg	+65 97333181
Kenneth Lim	Design Manager	kenneth@polytech.com.sg	+65 91882459
Patrick Khong	Sales Account Manager	patrick@polytech.com.sg	+86 13211007786
Jin Tan	Sales Manager	jin@polytech.com.sg	+65 96529772
Bao Zhen	Logistics Manager	baozhen@polytech.com.sg	+65 67427738
Chen Yan	Accounts Officer	chenyan@polytech.com.sg	+65 67427738

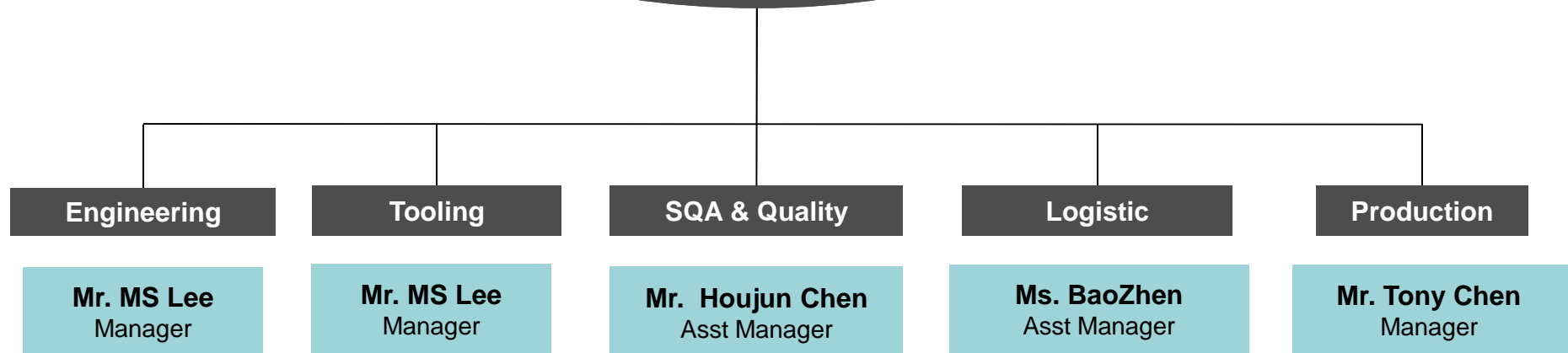


Polytech Component Pte Ltd
 10 Ubi Crescent #04-68
 Ubi TechPark Singapore 408564
 (Lobby D)
 Tel: (+65) 6742 7738
 Fax: (+65) 6749 7793
<http://www.polytech.com.sg>

Sales Division Organization



Polytech Singapore



CAD Review

Forecast

Cost Consideration

Industrial Design Review

Critical Requirements

Schedule Review

**Quality
Know How**

**Technical
Know How**

**Product
Know How**

**Process
Know How**

Early

Involvement

Cost Review

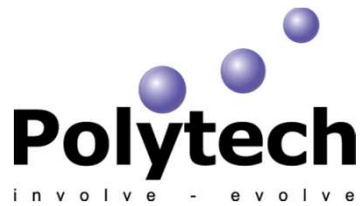
Brain Storming

Continuous Improvement

Tolerance

Edit CAD Files

Specification



Valued Customers

SAGEMCOM

KOSTAL



intelbras



Chicony

FLEXTRONICS®



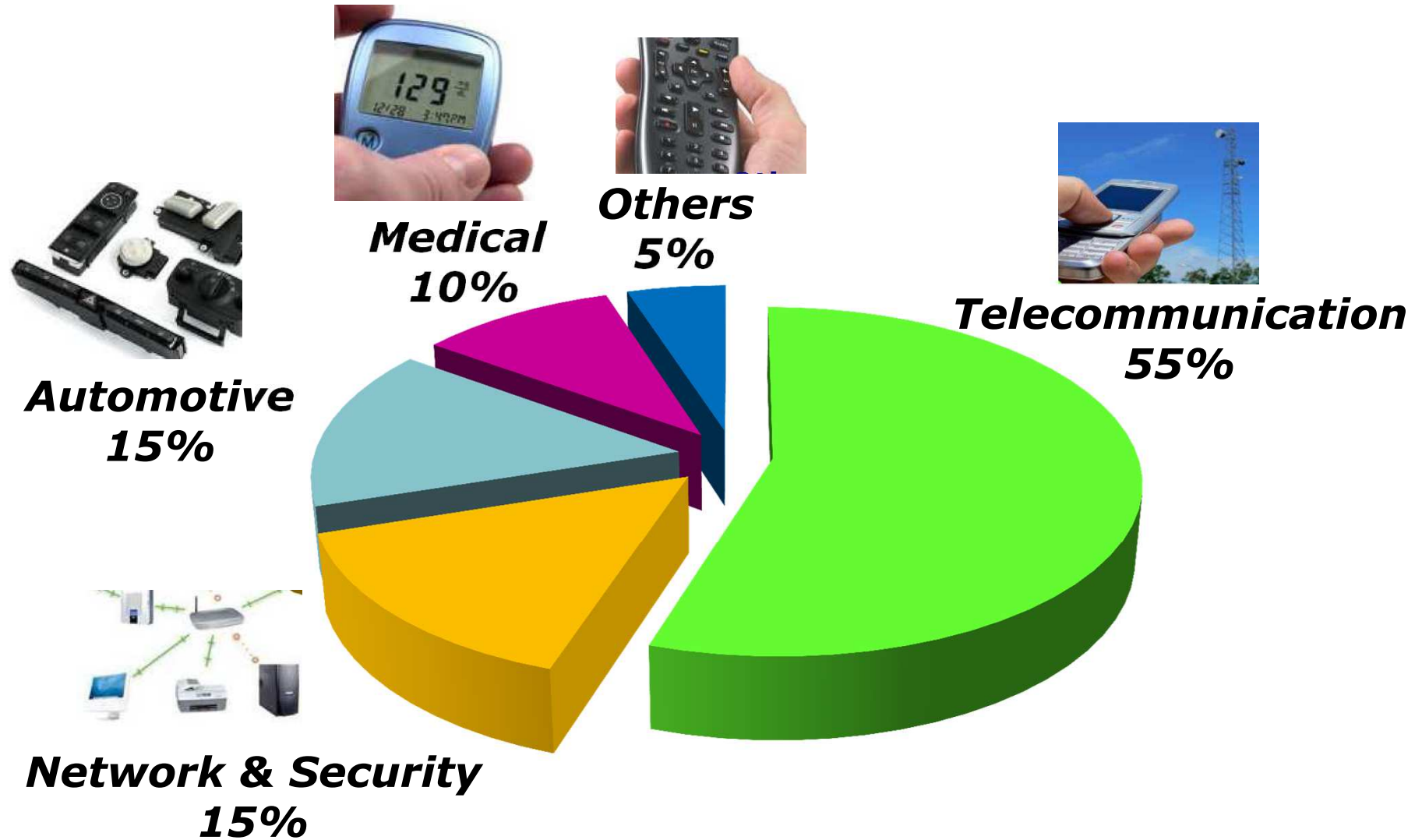
JABIL



T&W 同维



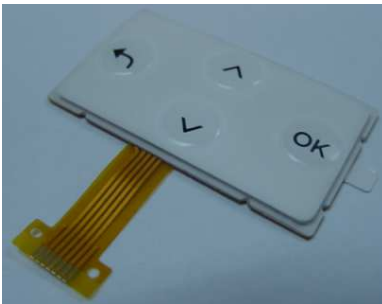
Markets Sector 2011



Telecommunication Keypads



Medical Keypads



Network/ Securities



Automotive Rubber



**Steering
Column Module**



**Radiator Rubber
Gasket**



**Door Rubber
Bumper**



**Door Control
Units**



Axles Boots/gasket bellow



**Control Panel and
switches**

Main Advantages

- Simple & reliable**
- Flexibility in force/way & design**
- Low cost**
- Water / Heat sealing**
- Different contact concepts**
- High dimensional accuracy**
- Corrosive resistance**
- Requires low maintenance**

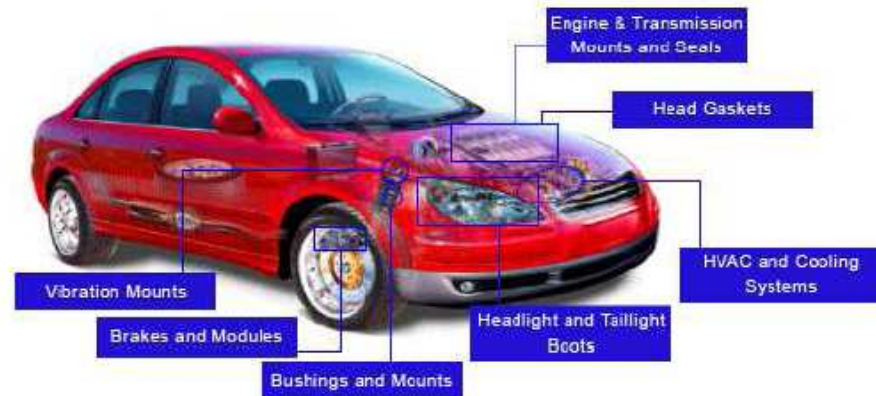
Rubber Selection

- **Rubber, Seals, & gaskets**

Polytech offers a wide range of rubber products: Grommets, Seals, Gaskets, Plungers, Custom molded Components, (with or without adhesives), and for [Automotive](#) & other industries.

Elastomers and rubbers like:

- **NBR** Natural Rubber
- **SBR** Styrol-Butadien Rubber
- **IIR** Isobutylene-Isoporene Rubber
- **EPDM** Ethylen-Propylen-Diem Rubber
- **VMQ** Silicone Rubber
- **FVMQ** Fluor-Silicone Rubber
- **CR** Chloroprene Rubber
- **NBR** Nitrile-Butadien Rubber
- **HNBR** Hydro-Nitrile-Butadien Rubber



Other Application Rubber



**Rubber Sleeves/Rubber
Foots with Adhesive**

DESCRIPTION

Standard and custom made rubber Sleeves/ Rubber Grommets with high temperature, ozone, oil, Grease resistance made out of NBR, SBR, EPDM, CR, VITON, SILICON etc.

APPLICATIONS

Control cable, Suspension Joints, Steering systems, Exhaust system, Tie Rod Ends and Axles, Tractors and Heavy Vehicles and Brake Systems



**Rubber to Metal
Bonded items**

DESCRIPTION

Metal bonded rubber parts for mountings and suspension systems with excellent Dynamic and Static properties under high temperature conditions.

APPLICATIONS

Automotive & Non-Automotive applications – Switches, Mountings, Suspensions and Silent Blocks



Rubber Gaskets

DESCRIPTION

Moulded Rubber Gaskets, high precision, for high oil, fluids & extreme temperature resistant using NBR, HNBR, EPDM, CR, VITON, SILICON, AFLAS, POLYACRICLIC etc.

APPLICATIONS

Automotive, Non-Automotive applications **including Filters (Oil, Water, Air)**, Domestic appliances such as **Pressure cookers, Mixer Grinders, Air conditioners, Ovens, Washing Machines and Refrigerators**

Others Component

☐ **FPC Module**

☐ **PC Film + Rubber**

☐ **Plastic Casing**

☐ **Front Panel Overlay**

☐ **Metal Dome Sheet**

☐ **Plastic + TPU/LSR**

☐ **Plastic + Rubber**

☐ **Light Guide Film**

☐ **Membrane Switch**

☐ **Poly Dome Sheet**

☐ **Silicone Rubber**

☐ **UV Resin Keypad**

Production Capacity



Product Type	Q3 2012	Q4 2012	Q1 2013
P + R / TPU	1.5M / Month	1.5M / Month	1.5M / Month
Rubber	3M / Month	3M / Month	3M / Month
TPU	100K / Month	100k / Month	100K / Month
PC Film + Rubber	200K / Month	200k / Month	200k / Month
UV keypad	100K / Month	150K / Month	200K / Month
IMD	300K / Month	300K / Month	300K / Month



Production Facilities



Assembly



**Laser
Etching**



CNC Lens Cutter



Compression



Printing



Injection

Measuring Equipment



CMM Measuring



2D Measuring



3D Measuring



RCA Abrasion Tester



Zwick Force Tester

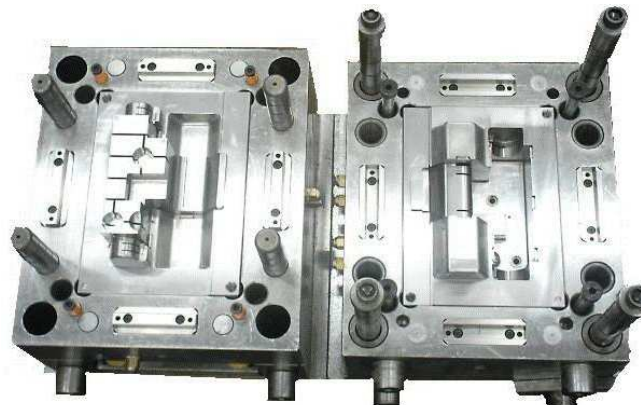
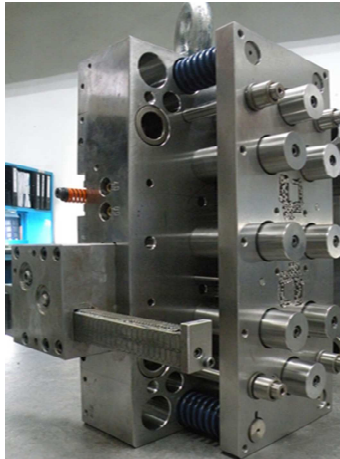


RDA Abrasion Tester



Humidity Test Chamber

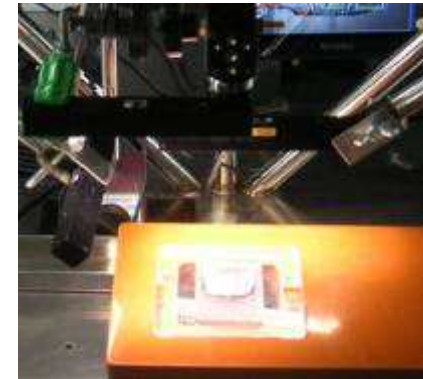
Tooling Facilities



KEYENCE

CV-2100 Series

- High-Speed Digital Machine Vision System



- Fastest in its class
Ultra-high-speed processing of 20,000 parts/min
- Digital image transfer
- Repeatability of ± 0.05 pixels
- On-screen statistical data processing
- High-speed rotation search
- Trend edge function
- Easy program setup by following the menu from top to bottom

Thank You !

